



Innovation. In our raw materials. In our solutions.

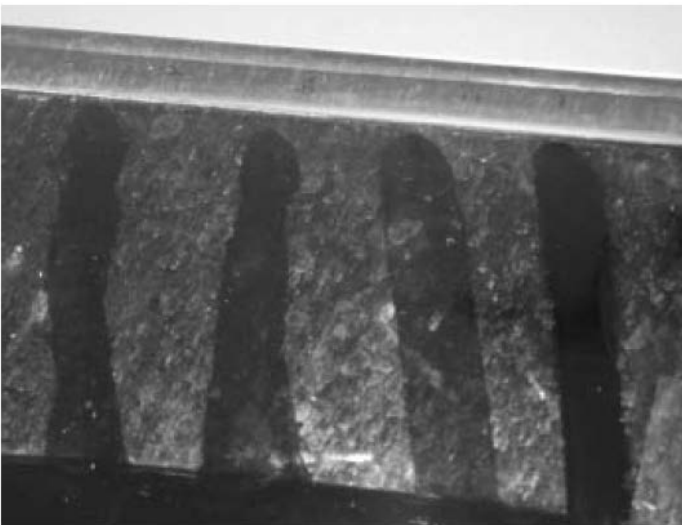


COST / PERFORMANCE

ENVIRONMENT / HEALTH & SAFETY

PERFORMANCE

USES & APPLICATIONS



A formulation of ALB/PPS/ES1 (far left) offered the best results compared to 3 other formulations of alcohol ethoxylate/anionic based systems that were tested.



Innovation. In our raw materials. In our solutions.

iDATASM assist

Need assistance in developing a custom solution?

Vitech has a full-service lab that can collaborate with you and help you meet your cost, performance and environmental objectives! **Click the HELP! icon** and let us earn the right to invest in your success!



PRODUCT SPECIFICATIONS

PACKAGE & HANDLING

REGULATORY / TOX INFORMATION
